

SUPERSORB

DESCRIPTION

SUPERSORB is developed by using the technology of high surface area mineral fillers and waste organic cellulose absorbents. It uses the concept of “cellulose/filler attraction” or the force of adhesion between solid and liquid in cellulose / fillers.

SUPERSORB is a superior economical product for commercial and household market.

SUPERSORB can be applied from smooth to rough hard surfaces. The fine mineral fillers enable it to absorb deep inside the pores of the rough surface while the organic cellulose will absorb on the smooth surface. It gives a very clean and dry absorption over the spills. Because of the upper and lower crystal surface dissimilarity, the mineral fillers of SUPERSORB can bond to itself resulting most of the spills bond to each other in clumps. Thus, the spill can be easily swept off and discarded.

APPLICATIONS

SUPERSORB can be used on all hard surfaces for the following spills:

- Petrol
- Synthetic Oil
- Diesel
- Oil Sludge
- Water Treatment Sludge
- Kerosene
- Crude Oil
- All types of Cooking Oil
- Paraffin
- Vomit
- Urine
- Wet Cement
- Food Waste
- Wet Paint
- Blood
- Wet rubbish
- Human Faeces
- Animal faeces

- Sauces

Apply SUPERSORB over the spill evenly. Use a scoop rake or broom and move it back and forth over the spill until surface is dry. It is important to spread enough SUPERSORB over the spill in order to get a no surface slick.

ADVANTAGES

- absorbs variety of spills compared to other absorbents
- absorbs all types of oil and hydrocarbon
- require no secondary detergent wash
- solvent free
- spill bond with absorbent in clumps
- quick, safe and biodegradable
- easy to use and non toxic
- made of natural mineral materials
- harmless to human, animals and plants
- 100% made in Malaysia

USAGE INSTRUCTION

1. Ensure source of spill is stopped.
2. Surround the spill with SUPERSORB starting from the lowest level of the spill.
3. Spread the entire spill area with SUPERSORB.
4. Use a scoop rake or broom and move it back and forth over the spill until spill is completely absorbed. SUPERSORB will bond with the spill into clumps.
5. Sweep off the clumps and discard off. The surface is now clean and dry.
6. No secondary washing is needed.

PICTORIAL GUIDELINES 1/3



1. SUPERSORB sample.



2. Dirty motor oil sample.



3. Pouring of dirty motor oil onto floor.



4. Further pouring of dirty motor oil onto floor.



5. Preparing the application of Supersorb.



6. Applying Supersorb over dirty oil.

PICTORIAL INSTRUCTION 2/3



8. Spread the entire spill area with SUPERSORB.



7. Use a broom to move it back and forth over the spill until spill is completely absorbed.



9. Sweep the spill in overlapping strokes in towards the centre of the spill.



10. Spill is ready for disposal.



11. Sweep the spill into a dustpan with a heavy duty brush.



12. A closer look of sweeping the spill into a dustpan with a heavy duty brush.

PICTORIAL INSTRUCTION 3/3



13. The surface is clean and dry. No secondary washing is needed.

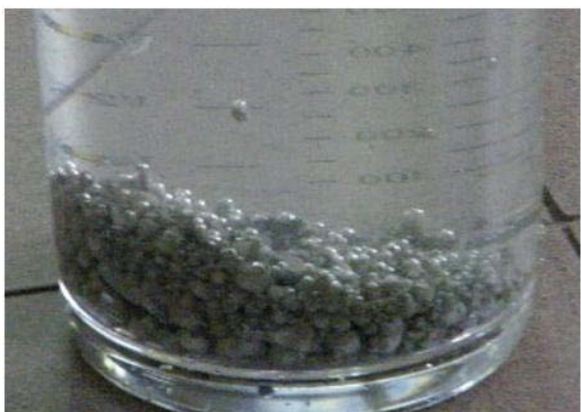
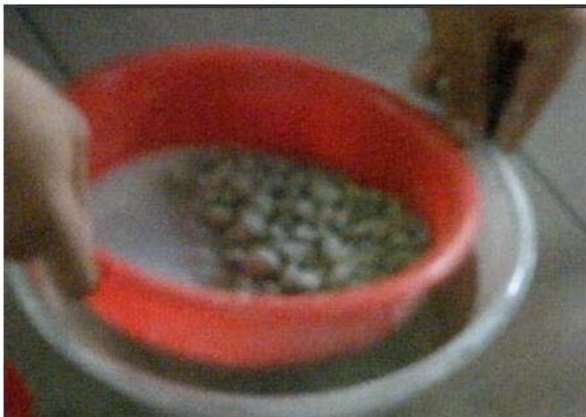
TESTING ON LEAKING OF OIL SPILL CLUMPS Test A: Spill clumps and Supersorb powder





TESTING ON LEAKING OF OIL SPILL CLUMPS

Test B: Spill clumps only



Both Test A and Test B showed no leaking of oil into water.